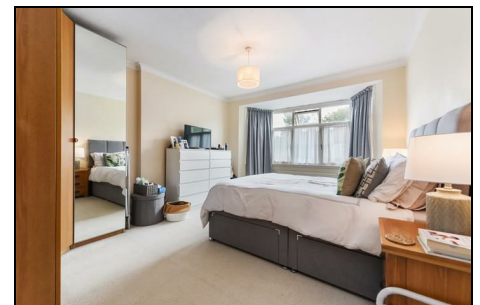
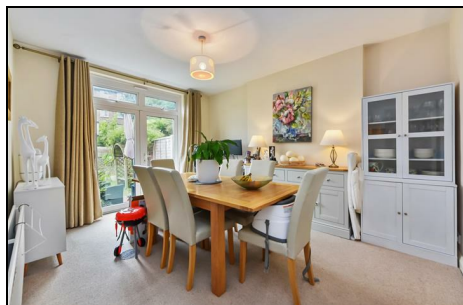


Firstway Raynes Park, SW20 0JD

£775,000 Freehold



This spacious and centrally located **THREE DOUBLE BEDROOM** un-extended 1930's Blay house has a lovely 74'ft South Facing garden and off street parking. Positioned on a desirable cul de sac only 0.1 Mile to Raynes Park Station and High Street. Offering excellent potential to extend s.t.p.p. No onward chain.



Although these particulars are believed to be correct, their accuracy is not guaranteed and they do not form part of any contract.

**Celebrating 30 years
of successful Sales and
Lettings in Merton**

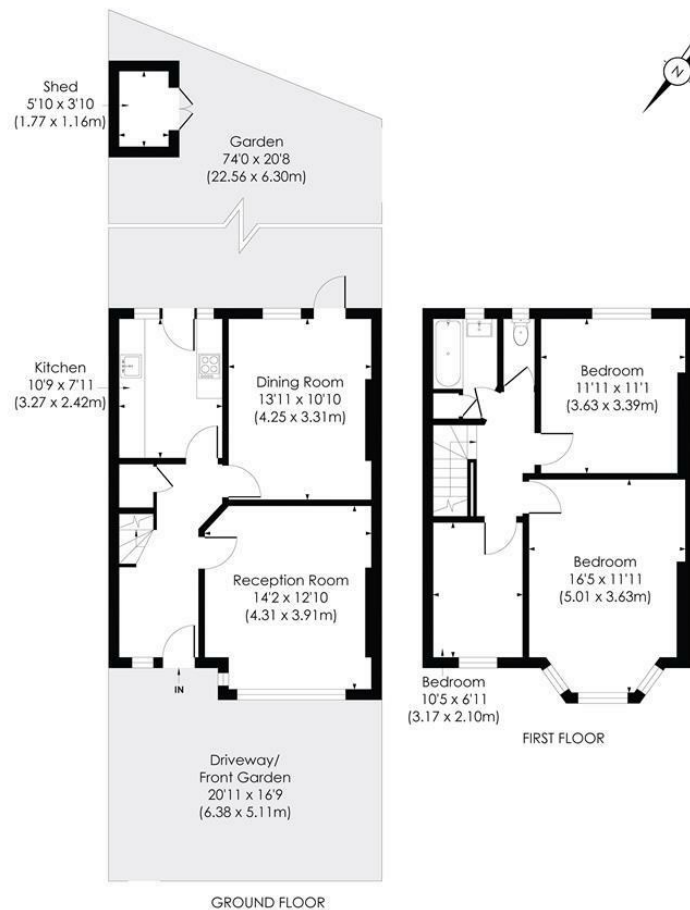


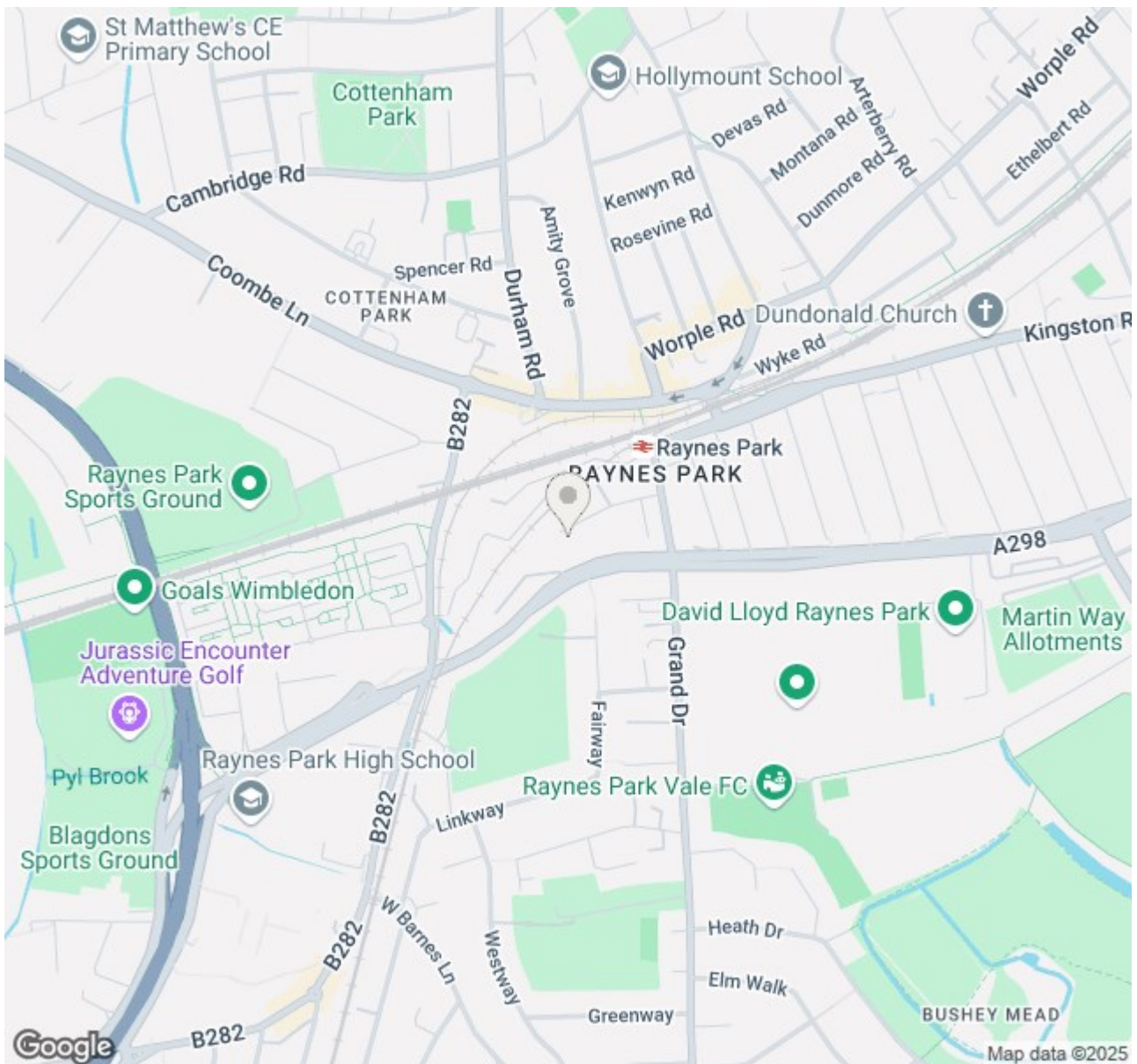


FIRSTWAY, SW20

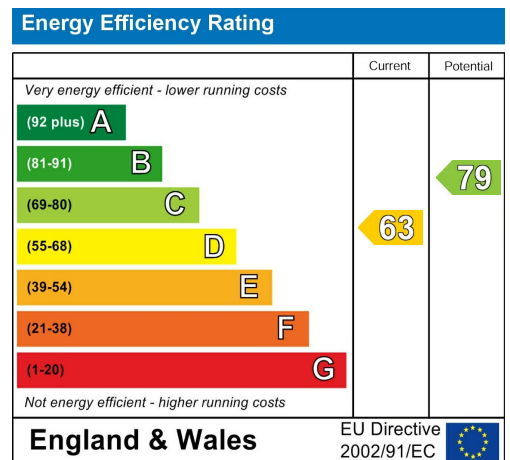
Approx.Gross Internal Floor Area

1060 Sq. ft/98.47 Sq. m





- Three Double Bedroom
- 1930's Mid Terrace Blay House
- Potential To Extend S.T.P.P
- No Onward Chain
- 0.1 Mile to Raynes Park Station
- 74'ft South Facing Garden
- Desirable Cul De Sac Location
- Off Street Parking
- EPC - D
- Council Tax Band - E



For Free Mortgage Quote and Best Mortgage Rates, call Ellisons Mortgage Advisor on 0208 944 9595



Although these particulars are believed to be correct, their accuracy is not guaranteed and they do not form part of any contract.

Celebrating 30 years of successful Sales and Lettings in Merton

